



***Language for Life***  
**NEWSLETTER**     **19 FEBRUARY 2020 Week 3**

<https://www.facebook.com/southeastldc/>

**INSIDE THIS ISSUE**

- From the Principal's desk
- P&C News
- All Campuses News
- Term Planner
- Recycling Certificate
- Let's Talk



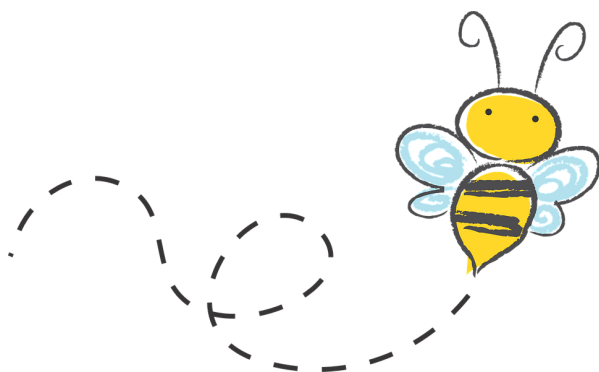
Welcome to week three already. The term seems to be going very quickly. Staff and students across all three campuses are working hard. Teachers have begun collecting data to help writing your child's Individual Language Plan. These plans are developed in collaboration with our Speech Pathologists and you will be invited by your child's teacher to a meeting to discuss their learning journey.

Thank you to our families who were able to make to our class meetings held last week. If you wish to discuss your child's progress with the teacher please organize a separate time for this.

There will be some vacancies on our School Board this year that we will need to fill. We will be sending out an expression of interest and I know we have some very keen parents who expressed an interest in this last year. I encourage any interested parents to look out for our nomination form.

The P&C does an amazing job of supporting the school through fundraising and supporting our school community. Meetings are usually held once or twice per term. Getting involved in the P&C is a great way to meet other parents and help the Language Centre. We always welcome new members and will be holding our first meeting soon. We have the AGM scheduled for this Friday 21 February at Cloverdale Campus please come along. The P & C have already started organising some fun events including an Easter raffle and Mother's Day events. More information about these events will be coming up in future newsletters.

Regards,  
Ronnie O'Neil  
Principal



**IMPORTANT DATES:**

**TERM DATES**

- Term 1 2020 ends - Thurs 9 Apr
- Term 2 2020 begins - Wed 29 April

**P&C MEETING**

- Fri 21 Feb 9.30  
Cloverdale Campus

**DONATIONS - WASTE WISE AUDIT**

To aid us with our Waste Audit and to help with our "re-use" policy, we would like to ask for donations of items, including **small tarps (to sort the rubbish), small buckets/bins and sets of tongs**. Please send them in to your classroom teacher if you can help us out with this. Don't forget that we also have battery recycling bins at school, so you can send your old batteries for disposal. We managed to collect 23.2kg of batteries last year.

One of the ways that you can help with reducing waste is to ensure that you label all of your child's loose items, hats, jumpers, lunchboxes, drink bottles etc so that they can be returned to you when misplaced and not disposed of when they are unclaimed.

**P&C NEWS WEEK 3**

We want to welcome all families to the start of the year, and we hope you have had a good school break.

This Friday 21st at 9:30 am, in the Cloverdale staff room, we will have our AGM (Annual General Meeting). This meeting will be to appoint the new executive positions for this year; these include President, Vice-President, Secretary and Treasurer. These positions are open to last year's members as well. We will also need to have the correct number of members to be able to operate this year. If we are unable to get the required numbers for the P&C, there will not be any fundraisers for the year. After the AGM, we will have a General meeting to discuss any topics and organize events for the school (providing we have the correct numbers, 10 members).

We look forward to seeing returning members and new members this year.

Please email [semldcpandcsecretary@outlook.com](mailto:semldcpandcsecretary@outlook.com) for further information.

*The P&C are proud to support all our Campus activities and hope to meet you all over the up and coming terms.*

**ALL CAMPUSES NEWS****SCHOOL CONTRIBUTIONS**

School contributions are due at the beginning of each year. These contributions allow us to offer an enriching program for our students. Thank you to all the families that have already paid. If you have not, we would greatly appreciate payment as soon as possible so that resources can be purchased and used by this year's students.

Payment options are:

- \$ 15 x 4 payments (1 per term)
- \$ 30 x 2 payments
- \$ 6 x 10 payments
- \$60 x 1 payment

Payments can be made by:

- Cash - can be sent in a sealed envelope with your child.
- Online banking - when paying online please state your child's surname and first initial.

Account details:

BSB: 066-153

Acc: 00902029

Acct name: South East Metro LDC

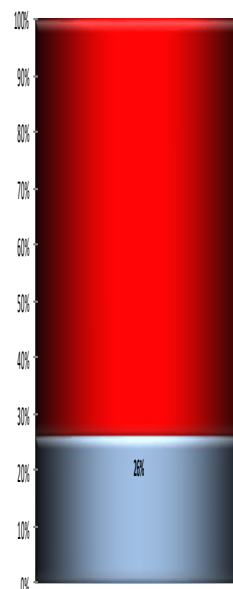
- Setting up a direct debit with your bank. If you set one up right now, it would only be \$5 per fortnight and they would be paid by the beginning of term 3.

Statements have been sent home.

If you are having difficulty paying, payment plans can be arranged by contacting the office on 9473 9600.

Discounts are given for more than one child attending the LDC, two children \$100, three children \$120.

As you can see from the thermometer on the right we have only received 26% of school contributions so far this

**SCHOOL WEBSITE**

Did you know you can find all sorts of information about our school on our website.

This includes the weekly newsletter, term planners, uniform order forms etc.

You can check us out by clicking on the following link; <https://southeastldc.wa.edu.au/>





## SOUTH EAST METROPOLITAN LANGUAGE DEVELOPMENT CENTRE

### Term 1 Planner ~ 2020 ~ Maddington Campus

Week	Monday <i>Uniform Shop 8.30am – 9am</i>	Tuesday	Wednesday <i>Newsletter</i>	Thursday	Friday <i>Uniform Shop 2pm – 2.30pm</i>
<b>Feb 1</b>	3 Students Return	4	5	6	7 Combined Assembly with EMPS
<b>2</b>	10	11	12	13 Parent Meetings	14 Combined Assembly with EMPS
<b>3</b>	17	18	19	20	21 Community Time Assembly
<b>4</b>	24	25	26	27	28 Combined Assembly with EMPS
<b>March 5</b>	2 LABOUR DAY	3	4	5	6 Community Time Assembly
<b>6</b>	9	10	11	12	13 Combined Assembly with EMPS
<b>7</b>	16	17	18	19	20 Community Time Assembly
<b>8</b>	23	24	25	26	27 Combined Assembly with EMPS
<b>Mar/April 9</b>	30	31	1	2	3 Community Time Assembly
<b>April 10</b>	6	7	8	9	10 GOOD FRIDAY

# Certificate of Appreciation

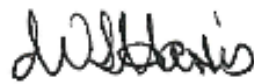


This certificate is proudly presented to  
the students of

## *South East Metro Language Development Centre*

for their ongoing participation and support of the  
Eastern Metropolitan Regional Council's Battery  
Collection Program for Schools.

South East Metro Language Development Centre students  
collected 23.2 kilograms of household  
batteries from January to December 2019.



Wendy Harris  
Chief Sustainability Officer  
10 February 2020



# Let's Talk!

## Week Two

### Asking your child questions about school

The start of a new year is an exciting time, so much happens at school and as parents we want to know all about it. But when we ask the question "What did you do today?" we sometimes get the answer "nothing!!" or "I don't know". Try these questions instead and see if you get a better answer:

- Who did you sit next to in class?
- What was your favourite thing you did at school today?
- What was something that made you happy at school today?
- If you could change one thing about school today, what would it be? Why is that?